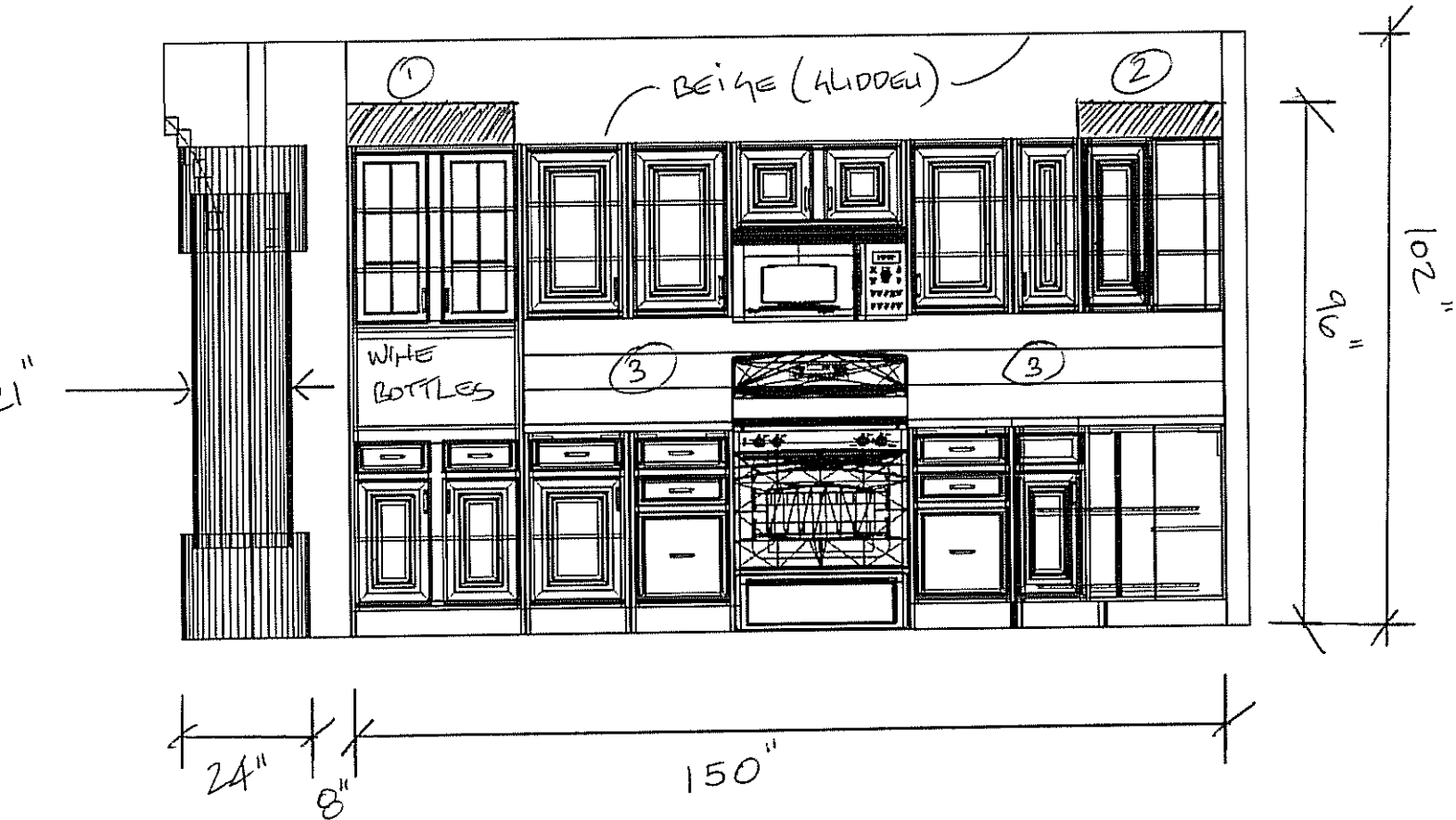
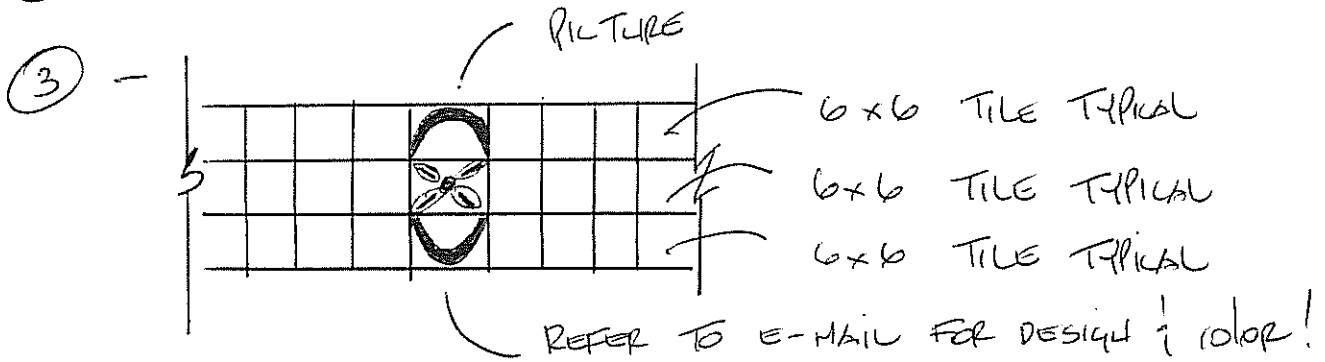


ELEVATION (STOVE)

NOTES:

- ① EXTEND END CABINETS TO 96" HIGHT. (FROM FLOOR)
- ② EXTEND LOWER CABINET TO 96" HIGHT (FROM FLOOR)



NOTES:

- * CLR HGT = 102"
- * TOP OF CABINETS = 84"
- * TOP OF END CABINETS = 96" (PROPOSED)